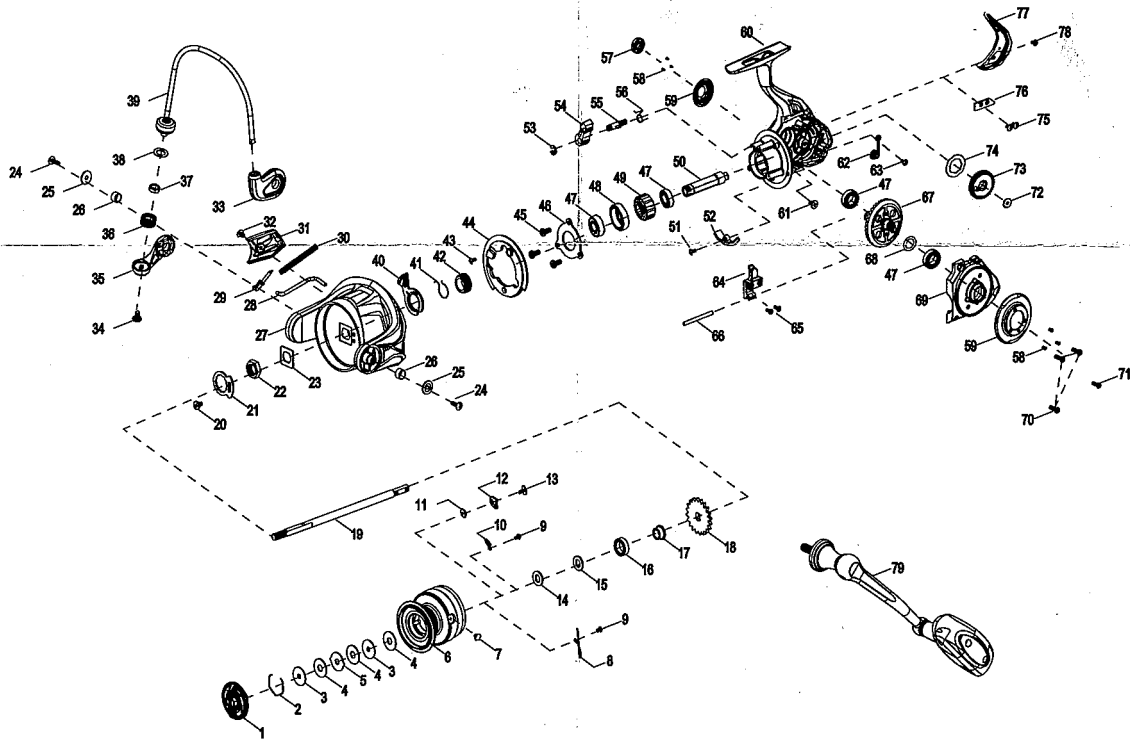


SAVAGE GEAR *it's a savage world*

EXPLODED VIEW OF SGS6 8000 - 10000



EXPLODED VIEW OF SGS6 8000 - 10000

ITEM	DESCRIPTION	ITEM	DESCRIPTION	ITEM	DESCRIPTION
1	Drag Knob Assy	28	Rotor Trip Lever	55	A/R Pawl Post
2	Spool Clasp	29	Pivot Arm	56	Pawl Spring
3	Washer	30	Bail Spring	57	Handle Cap
4	Key Washer	31	Rotor Cover	58	Screw
5	Eared Washer	32	Screw	59	Body Trim Ring
6	Spool	33	Bail Holder	60	Body
7	Line Hook	34	Screw	61	Screw
8	Spring	35	Bail Arm	62	Lube Port Cap
9	Screw	36	Line Roller	63	Screw
10	Spring	37	Bearing	64	Slider
11	Spool Clicker Spacer Ring	38	Washer	65	Screw
12	Spool Click Plate	39	Bail Assembly	66	Guide Shaft
13	Screw	40	A/R Pawl Holder	67	Drive Gear
14	Washer	41	A/R Bushing Spring	68	Washer
15	Washer	42	A/R Bushing	69	Body Cover
16	Bearing	43	Screw	70	Screw
17	Bushing	44	Rotor Brake	71	Screw
18	Click Gear	45	Screw	72	Screw
19	Main Shaft	46	Ball Bearing Retainer	73	O/S Gear
20	Screw	47	Bearing	74	Washer
21	Rotor Nut Locking Plate	48	Pinion Bearing Collar	75	Screw
22	Rotor Nut	49	One Way Clutch Bearing Assembly	76	Plate
23	Washer	50	Pinion Gear	77	Rear Cover
24	Screw	51	Screw	78	Screw
25	Rotor Plate	52	Body Slope	79	Handle Assembly
26	Bushing	53	Retainer Clip		
27	Rotor	54	A/R Pawl		

